

# SIMONSWERK TECTUS®

## TE 240 3D

for unrebated and rebated flush residential doors

**hinge** up to 40 kg

### Technical Details

Load capacity	40,0 kg
Length (door/frame)	155,0/155,0 mm
Width (door/frame)	18,0/21,0 mm
Cutter diameter	16,0 mm

### Descriptive Text

SIMONSWERK TECTUS TE 240 3D Hinge. Completely concealed for unrebated and rebated flush doors with timber, steel and aluminium frames. Load capacity 40 kg, opening angle up to 180°, overall length 155 mm, right hand and left hand applicable, maintenance-free slide bearings, three-dimensionally adjustable: side +/- 3 mm, height +/- 3 mm, compression +/- 1,5 mm. Finish ...

### Note

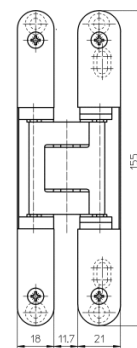
Finger protection due to a small gap between door and frame

### Combination

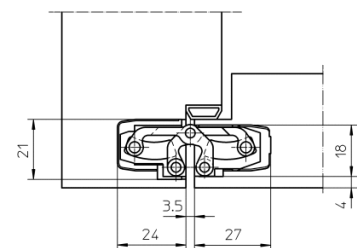
Receiver	casing frame	TE 240 3D FZ/1
	steel frame	TE 240 3D SZ

### Installation aids

universal milling frame	
Template No. 5 250691 6	frame
Template No. 5 250692 6	door



front view



block frame

# SIMONSWERK

## TECTUS®

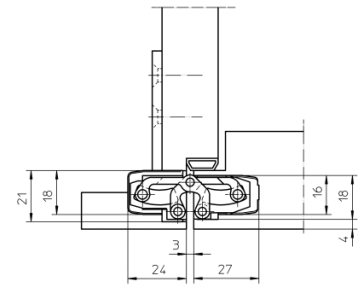
### TE 240 3D

for unrebated and rebated flush residential doors

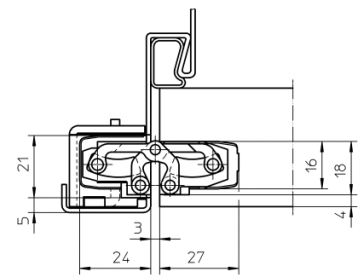
**hinge** up to 40 kg

**Items** (DIN direction: DIN right and left hand applicable)

<b>finish(es)</b>	polished brassed
<b>Packing unit</b>	Pack of 2
<b>Item number</b>	5 400586 0 03002
<b>finish(es)</b>	polished nickelled
<b>Packing unit</b>	Pack of 2
<b>Item number</b>	5 400586 0 03802
<b>finish(es)</b>	powder coated
<b>Packing unit</b>	EUR pallet
<b>Item number</b>	5 400586 0 07975
<b>finish(es)</b>	F1 powder coated
<b>Packing unit</b>	Pack of 2
<b>Item number</b>	5 400586 0 12402
<b>finish(es)</b>	F2 powder coated
<b>Packing unit</b>	Pack of 2
<b>Item number</b>	5 400586 0 12502
<b>finish(es)</b>	stainless steel look
<b>Packing unit</b>	Pack of 2
<b>Item number</b>	5 400586 0 12602



casing frame



steel frame